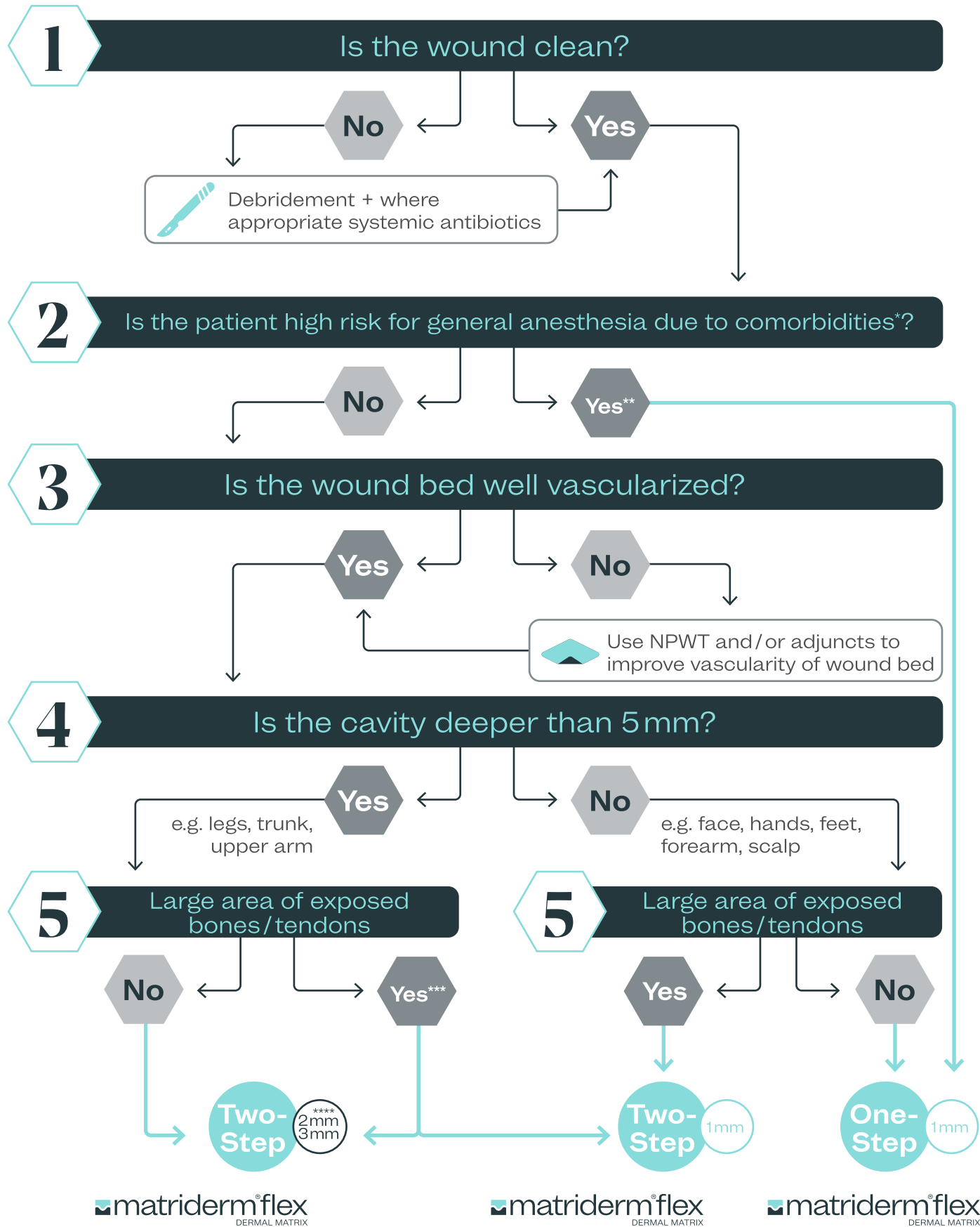


Decision Tree



For highly exudating wounds: **matriderm[®] FENESTRATED DERMAL MATRIX**

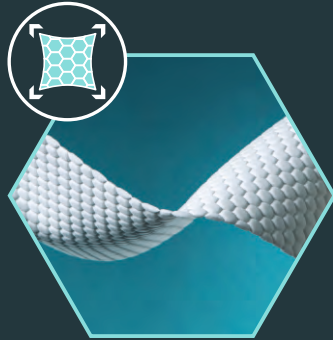
For highly exudating wounds: **matriderm[®] FENESTRATED DERMAL MATRIX**

* This applies for both local and general anesthesia
 ** Irrespective of depth of cavity and degree of exposes bones/tendons
 *** Depending on surgeon's experience and patient factors
 **** Please ensure that the patient and wound condition are appropriate

matriderm[®]flex

DERMAL MATRIX

- ◆ Flexible
- ◆ More collagen*
- ◆ Stronger*
- ◆ Conformable at complicated anatomic areas
- ◆ Easy to use, handle and apply
- ◆ All sizes available in 3 different thicknesses

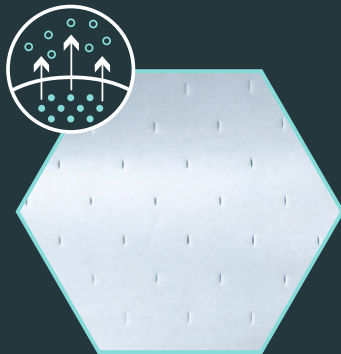


	Ref. No.	Size
A4	83440 - 200	210 x 297 x 1mm
	83460 - 200	210 x 297 x 2mm
	83470 - 200	210 x 297 x 3mm
A6	83441 - 200	105 x 148 x 1mm
	83461 - 200	105 x 148 x 2mm
	83471 - 200	105 x 148 x 3mm
A8	83442 - 200	52 x 74 x 1mm
	83462 - 200	52 x 74 x 2mm
	83472 - 200	52 x 74 x 3mm
A9	83443 - 200	37 x 52 x 1mm
	83463 - 200	37 x 52 x 2mm
	83473 - 200	37 x 52 x 3mm

matriderm[®]

FENESTRATED DERMAL MATRIX

- ◆ For high exudating wounds
- ◆ More collagen*
- ◆ Stronger*
- ◆ Easy to use, handle and apply
- ◆ All sizes available in 3 different thicknesses



	Ref. No.	Size
A4	83410 - 200	210 x 297 x 1mm
	83420 - 200	210 x 297 x 2mm
	83430 - 200	210 x 297 x 3mm
A6	83411 - 200	105 x 148 x 1mm
	83421 - 200	105 x 148 x 2mm
	83431 - 200	105 x 148 x 3mm
A8	83412 - 200	52 x 74 x 1mm
	83422 - 200	52 x 74 x 2mm
	83432 - 200	52 x 74 x 3mm
A9	83413 - 200	37 x 52 x 1mm
	83423 - 200	37 x 52 x 2mm
	83433 - 200	37 x 52 x 3mm

* 3mm compared to 1mm sheet of MatriDerm Flex/Fenestrated Dermal Matrix

Please check complete indications and recommended application in your local Instructions for Use (IFU) before using MatriDerm[®].

Marketed and distributed in India by:
 GR Health Aids Private Limited
 406 Global Foyer Golf Course Road
 Sector 43 Gurugram 122002
 +91-9809803300
 support@healthaids.in
 www.healthaids.in



MedSkin Solutions Dr. Suwelack AG, Josef-Suwelack-Strasse 2, 48727 Billerbeck, Germany
 +49 (0) 2543 2182-0 info@medskin-suwelack.com medskin-suwelack.com

Material number 89644-002